



DRIVE ALIVE

COLT CZC
THE COUPÉ-CABRIOLET



**IT'S NOT EVERYDAY THAT YOU DISCOVER A VAST NEW SENSE OF FREEDOM.
BUT IT COULD BE.**

To create the ultimate al fresco driving experience, Mitsubishi Motors joined forces with Pininfarina, Italy's most prestigious designers. Together they created the most powerful, spacious coupé-cabriolet in its class.

The new Colt CZC will make the smallest of roads feel like a huge expanse.



pininfarina









THE INSIDE MAY BE VAST, BUT OUR DESIGNERS HAVEN'T OVERLOOKED THE SMALLEST OF DETAILS.

Everything from the heated leather seats to the audio remote control has been carefully designed with your comfort and driving pleasure in mind. The Colt CZC's curvaceous exterior design continues throughout the interior too with circular vents, controls and dials. The coupé-cabriolet also boasts electric and heated door mirrors, leather steering wheel and shift knob, power steering, height adjustable front seats and remote central door locking.







EVERY SINGLE CURVE OF ITS AESTHETIC SHAPE HAS BEEN DESIGNED TO BE OPENLY ADMIRERD.

The coupé-cabriolet's aerodynamic lines don't just look stylish, they're also home to lots of functional, practical, everyday features. Like the third stop lamp which integrates seamlessly into a rear spoiler for extra visibility, or the aesthetically designed 'A' pillar which not only enhances the safety and aerodynamics of the Colt CZC, it also creates more head room and keeps wind intrusion to a minimum.



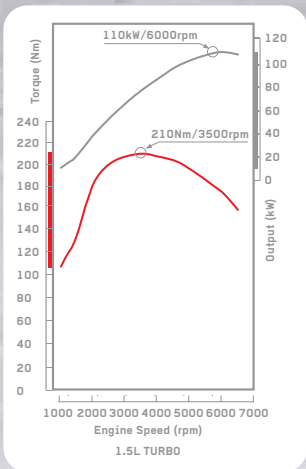
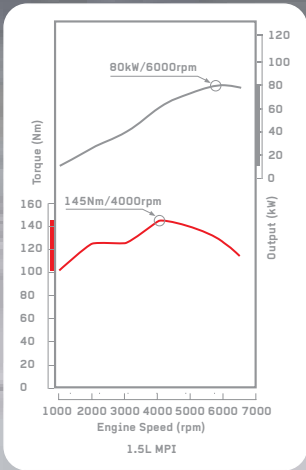






THE FASTEST FREE SPIRIT ON THE OPEN ROAD.

Put your foot down on the sports pedal and set the 150hp Turbo engine free. After all, that's what makes the Colt CZC the most powerful coupé-cabriolet in its class. Whether you're experiencing the dynamism and exhilaration of the Turbo or MPI, the Colt CZC's aerodynamics will accelerate you towards freedom and the open road, instantly.



DISCOVER THE FREEDOM AND FUN OF ANY ROAD.

If you're manoeuvring the twists and turns of country lanes or snaking around busy city streets, the Colt CZC handles every road with the same sense of fun, spirit, stability and freedom. Especially the Turbo model with its stability and traction control, sports suspension and 15" front disc brakes ensures the ride is safe and the performance thrilling.



15" front disc brakes



16" alloy wheel







FEEL THE SUN ON YOUR FACE, THE WIND IN YOUR HAIR AND DRY IN THE POURING RAIN.

There's nothing like the sense of freedom and space you feel inside the coupé-cabriolet, whether the roof's open or shut. To shield from the elements, just press the easy-to-reach button and the semi-automatic retractable hard top extends over you. Then, from the comfort of your seat simply lock the latches and enjoy the fact that even when you're inside you'll still feel like you're outdoors, only drier.



COLT ctc



YOU'D BE FORGIVEN FOR THINKING THERE'S AS MUCH SPACE INSIDE AS THERE IS OUTSIDE.

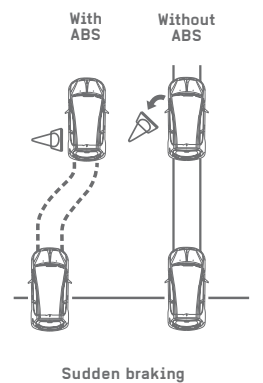
No wonder it feels so spacious, the Colt CZC is after all higher, wider and has a longer wheelbase than any of its competitors. Even with the roof down, you can easily pack quite a few bags into the trunk. That's not all. Two extra seats give others the opportunity to enjoy the thrill of the ride too.





**SPECIFICALLY DESIGNED NOT JUST FOR YOUR SAFETY, BUT EVERYONE ELSE'S AS WELL.
WHETHER THEY'RE IN THE CAR OR NOT.**

Pedestrians and other road users will appreciate the Colt CZC's ABS with Electronic Brake-force Distribution, just as much as you when you need to brake quickly. The stability and traction control provides you with extra grip and the stabilizer bar ensures better handling. The windshield sunshade gives you improved visibility especially on sunny days. There's also front and side airbags for driver and passenger to keep you safe in an emergency. The higher than average 'A' pillar withstands the weight of the car, providing extra head protection. All of this makes the Colt CZC the safest place to be.





WHAT YOU GET FOR THE PRICE, IS AS MUCH OF A SURPRISE AS THE SPACE YOU'LL DISCOVER INSIDE.

Packed with so many practical details and designs, the Colt CZC is full of surprises. Just some of its features include 16" alloy wheels, front fog lamps, coloured bumper protectors and side protector mouldings, electric and heated door mirrors and air-conditioner. Even with all of its space, you would never have expected to find everything it has got inside.



Air-conditioner



Glove box with bottle cooler



Audio remote control



Electric door mirror



Seat height adjuster

CALL YOUR DEALER TODAY FOR A TEST DRIVE AND DISCOVER A NEW SENSE OF FREEDOM, EVERYDAY.

The Colt CZC offers so much. In both the Turbo and MPI you'll experience thrilling performance, boundless space, unlimited freedom, stunning aesthetics, breath-taking speed, uncompromised safety, immense power and unrivalled value for money. So don't wait any longer, call your local dealer today for a test drive.



Wind deflector



Silver-coloured combimeter rings (standard on Turbo)



Bluetooth pad



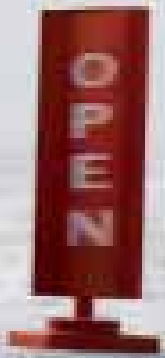
Child safety seat Duo Plus (isofix)*



Standard switch-off function for passenger front airbag



Front airdam (MPI only) / Upper sports grille



Side skirts (standard on Turbo) / Side garnish



Tailgate garnish

WHY NOT STOP AND PICK UP A FEW ACCESSORIES.

The sense of freedom you'll feel in the Colt CZC is amazing. You can experience it now; the freedom to create your personal, individual space and the freedom to choose your very own accessories. For more accessories available, please feel free to look at the Accessories catalogue.

*Please check the Colt CZC owner manual before installing a child seat

DRIVE ALIVE IS OUR MOTTO.

It's the reason our designers and engineers go to work everyday. Statistics show that you are going to spend 'years of your life' in your car. We want those 'years' to be as pleasurable and as rewarding for you as possible. We want to ensure that every time you're driving and put your foot down on the accelerator, or catch a glimpse of yourself reflected... you will want to smile. Smile to really feel alive... to really drive alive.

Mitsubishi Motors Europe BV
www.mitsubishi-motors-europe.com

Some equipment may vary according to market.
Please consult your local Mitsubishi Motors dealer/distributor for details. All rights reserved.

